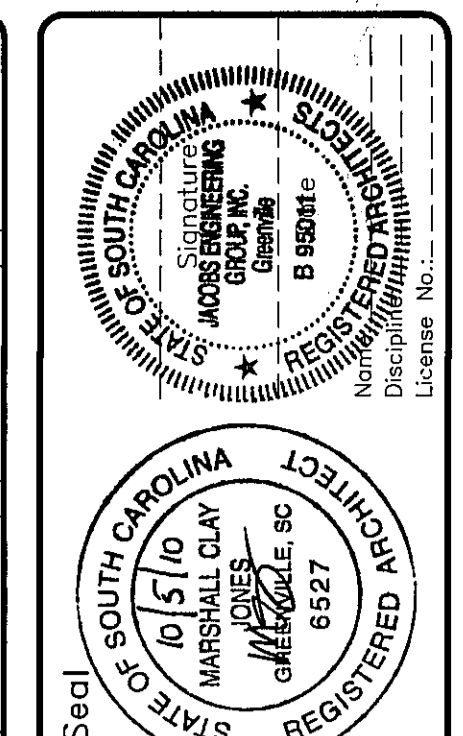


WALL PANEL LEGEND

METAL WALL PANEL TYPE 1	METAL-SPAN SANDWICH PANEL REGAL GRAY TEXTURED FINISH
METAL WALL PANEL TYPE 2	METAL-SPAN SANDWICH PANEL (MESA PROFILE) COLOR: SANTA ANNA BLUE STANDARD EMBOSSED FINISH
METAL WALL PANEL TYPE 3	METAL-SPAN SANDWICH PANEL (MESA PROFILE) COLOR: SANTA ANNA BLUE STANDARD EMBOSSED FINISH
METAL WALL PANEL TYPE 4	BUTLER BUTLERB II WALL PANEL (ROLL FORMED) MESA PROFILE COLOR: SANTA ANNA BLUE STANDARD EMBOSSED FINISH
METAL WALL PANEL TYPE 5	BUTLER BUTLERB II WALL PANEL (ROLL FORMED) MESA PROFILE COLOR: SANTA ANNA BLUE EMBOSSED FINISH
METAL WALL PANEL TYPE 6	BUTLER BUTLERB II WALL PANEL (ROLL FORMED) MESA PROFILE COLOR: SANTA ANNA BLUE EMBOSSED FINISH
METAL WALL PANEL TYPE 7	METAL-SPAN MINERAL WOOL PANEL (ROLL FORMED) SANTA ANNA BLUE STANDARD EMBOSSED FINISH
METAL WALL PANEL TYPE 8	METAL-SPAN MINERAL WOOL PANEL (ROLL FORMED) SANTA ANNA BLUE STANDARD EMBOSSED FINISH

- WALL PANEL NOTES:**
- GUTTER TO MATCH WALL PANEL COLOR REGAL GRAY.
 - CONTOUR GABLE TO MATCH WALL PANEL COLOR REGAL GRAY.
 - FINISH COLORS FOR WALL PANEL COLORS: REGAL GRAY AND SANTA ANNA BLUE AT STRIPE.
 - LOADING DOCK CANOPY LOCATED AT COLUMN CENTERLINE OF BAY 28. FINISH TO MATCH II ROOF PANEL (ROLL FORMED) COLOR: SANTA ANNA BLUE TRIM TO MATCH ROOF PANEL COLOR.
 - LOADING DOCK CANOPY LOCATED AT COLUMN CENTERLINE OF BAY 29. FINISH TO MATCH II ROOF PANEL (ROLL FORMED) COLOR: SANTA ANNA BLUE TRIM TO MATCH ROOF PANEL COLOR.
 - PANEL COLOR: REGAL GRAY TRIM TO MATCH ROOF PANEL COLOR.
 - SEE TO MATCH WALL SURFACES OR CHAUNK FAN FURNISHED BY BLUE SCOPE.
 - L-1: COMBINATION MOTORIZED LOWERER
 - REFER TO DRAWING A-300-H-00004 FOR WALL PENETRATION DETAILS.
 - DOUBLE TIE PIPE BRIDGES FOR PIPE AND CONDUIT TO BE INSTALLED IN WALLS. SEE A-300-H-00004 FOR TYPICAL DETAILS.
 - PROCESS PIPING REFER TO DWG A-300-H-00004 FOR TYPICAL DETAILS.
 - CABLE TRAY PENETRATIONS REFER TO DWG A-300-H-00004 FOR TYPICAL DETAILS.

10/25/10	ISSUED FOR CONSTRUCTION	AS	23
06/23/10	SHELL PACKAGE	AS	20
07/27/10	ISSUED FOR METAL WALL PANELS	AS	20
07/27/10	ISSUED FOR OVERALL LIFE	AS	20



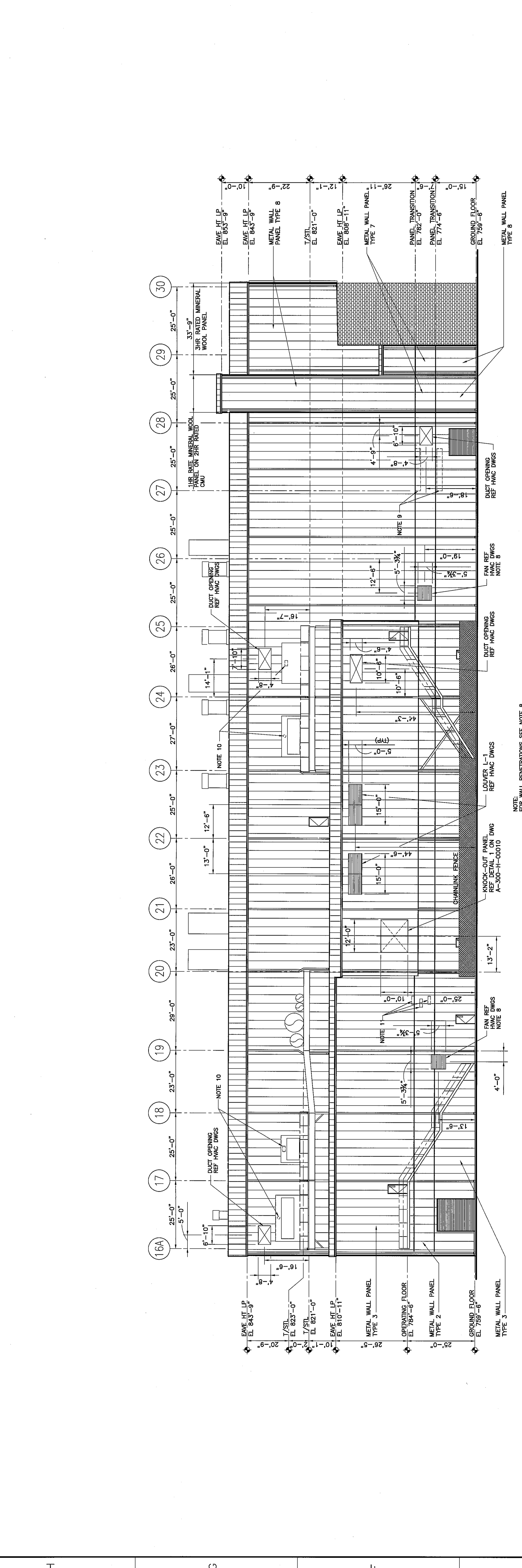
Project: S. DICKINSON Date: 04/29/2010
 Checker: S. MOODY Desig. Lead: C. JONES
 Originator: S. MILLER Scale: 1/16"=1'-0"
 Jacobs CAD File: A330F0002.DWG

JACOBS
 Jacobs Engineering Group, Inc.
 1041 East Bluff Road, Greenville, South Carolina 29607-5725
 Tel: 864-676-8000 Fax: 864-676-5023
 Firm Registration No.: 000116

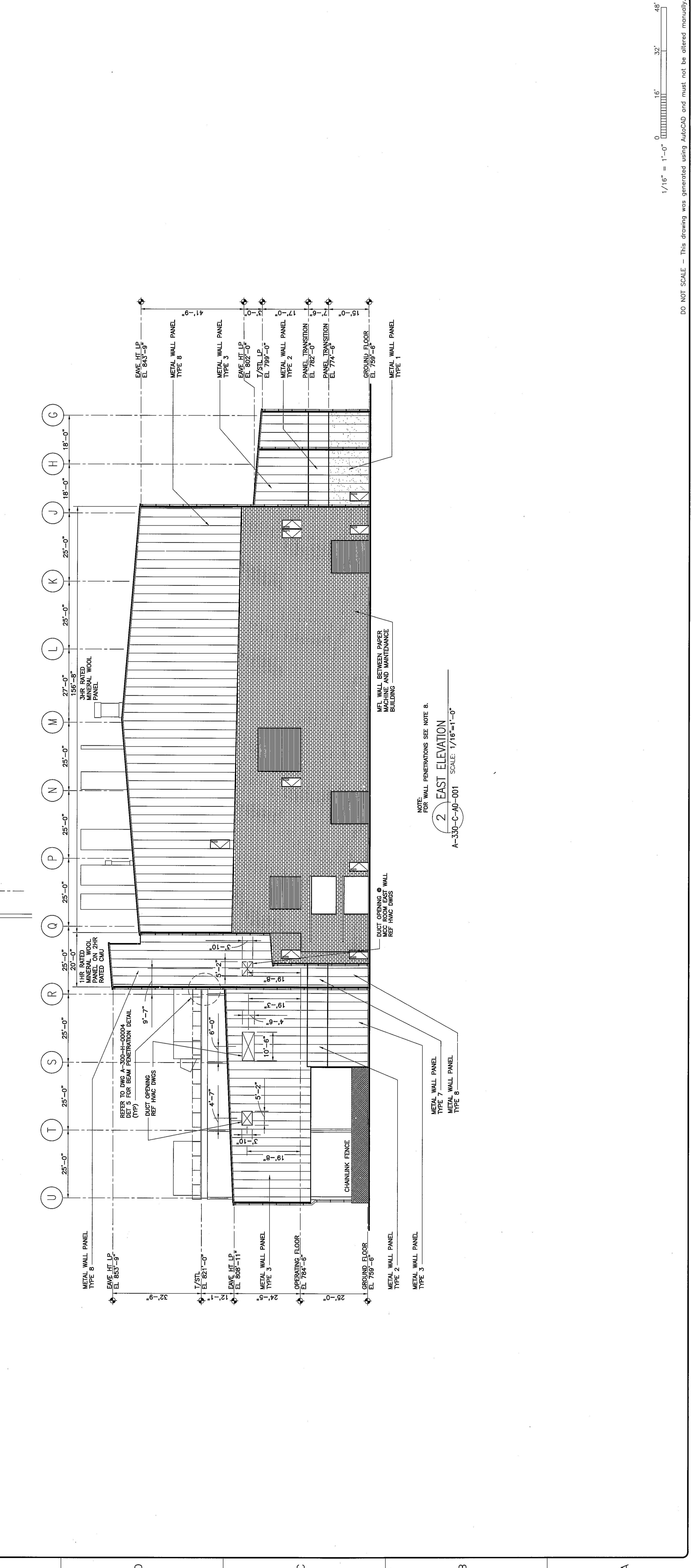
CANNONBALL
 THIS DRAWING IS THE PROPERTY OF JACOBS ENGINEERING GROUP, INC. AND IS NOT TO BE REPRODUCED, COPIED, OR TRANSMITTED IN ANY FORM OR BY ANY MEANS, ELECTRONIC OR MECHANICAL, WITHOUT THE WRITTEN PERMISSION OF JACOBS ENGINEERING GROUP, INC.

Drawing Title:
NO. 3 MACHINE AREA
330 - PAPER MACHINE AREA
ARCHITECTURAL
EXTERIOR ELEVATIONS

Client Drawing Number:
 Project No.: Jacobs Drawing Number
16MP1900 A-330-F-00002 2



1 SOUTH ELEVATION
 A-330-C-40-001 SCALE: 1/16"=1'-0"



2 EAST ELEVATION
 A-330-C-40-001 SCALE: 1/16"=1'-0"